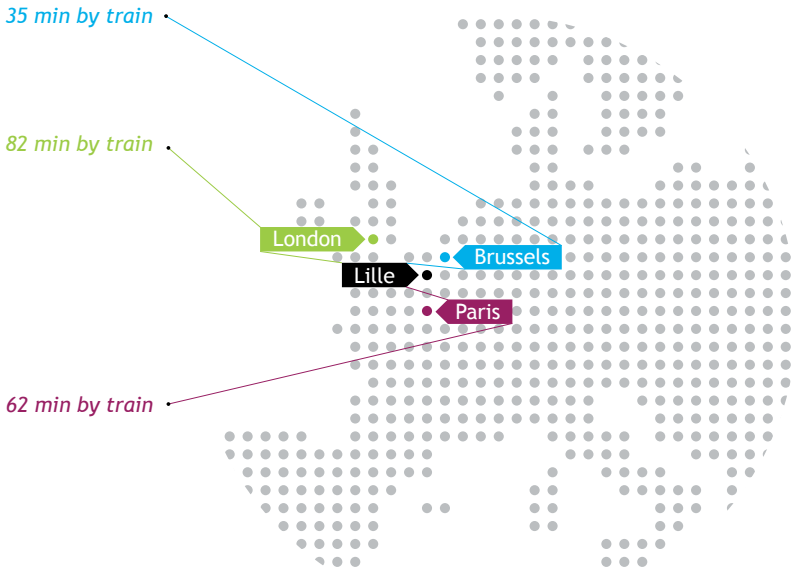


# Degree programmes in English

*Study in France at the University of Lille 1*







4 THE UNIVERSITY OF LILLE 1

6 THE FRENCH HIGHER EDUCATION SYSTEM

**BACHELOR PROGRAMME**

*Economics and Management*

8 Business Administration

**MASTER PROGRAMMES**

*Science, Technology, Health*

9 Advanced Spectroscopy in Chemistry

10 Atmospheric Environment

11 Electrical Engineering and Sustainable Development

12 Micro-Nanotechnology

13 Mathematical Engineering, Advanced Scientific Computing

15 Translational Neurosciences

16 Biology and Biotechnology, Genomics and Proteomics,  
speciality Proteomics

17 Urban Engineering and Habitat

18 Past and Current Geoenvironments

*Economics and Management*

20 Executive International Management

21 Economics of Globalisation and European Integration

22 Global E-Business

23 Management of European Affairs

*Human and Social Sciences*

24 Eurostudies - European Studies for Territorial and  
Urban Development

25 Intercultural Mediation : Identities, Mobilities, Conflicts

# Welcome to the University of Lille 1

Lille is situated in the North of France within a distance of 300 kilometers from five European countries, in the triangle between London, Paris and Brussels and it offers a truly European experience to all students.

Ideally located on a large and green campus with all the facilities close at hand: metro and bus connections to Lille city center, railway stations and surrounding cities, sports equipments, student cafeterias, halls of residence, cultural center ... In total a very nice place for living and studying.

In the University of Lille 1, you will find science, technology, engineering, economics, management, geography and sociology and above all, 16 Degrees fully taught in English.

Please have a careful look at the following brochure and discover the great benefits you could get from studying in the University of Lille 1.

## FACTS AND FIGURES

- **20th place** among French Universities (ranking QS Top 2013/2014)
- **20 000 students** including 19% international students and coming from 70 different countries
- **1 000 PhD-students** and **220 thesis defenses** per year
- **39 labelled laboratories** distributed in 5 institutes
- **7 major research fields**  
Biology / Molecules and materials / Environmental conservation sciences / Mathematics, Physics and Interactions / Mechanical and Civil Engineering / Information and Communication Sciences and Technologies / Social Sciences
- **Quality charter for Exchange programmes** awarded by the European Commission in 2007
- **International Label** developed by the University of Lille 1 and awarded in 2012 by the European Commission
- **Erasmus Mundus Programmes**  
Action 1 - Joint Programmes including scholarships  
Action 2 - Partnerships with Third Country higher education institutions and scholarships for mobility

## SERVICES

### Modern Languages Department

The Modern Languages Department enables you to study French, English, German or Spanish. Languages are taught in two dedicated buildings: B5 and SUP/SUAIO.

Two self-access language resources centres are available to students who want to improve their language skills.

### Career Service

In the SUP/SUAIO building, you can also find “Pass’Pro”, a special office reserved for professional orientation and job / internship seeking. You can have information about internships offers. Some seminars are organised throughout the year to help students with CV and application letters.

You can also find a large area reserved for documentation, information on careers, jobs and an area dedicated to the modelling of entrepreneurial culture and kick-off strating young businesses called the “Hubhouse”.

### Service of Disabled

If you are disabled or seriously sick, the student’s life office can help you in many ways (help with administrative procedures, with the organisation of courses, of exams...). Don’t hesitate to contact this office before your arrival.

### Societies and Clubs

There are over 60 clubs and societies on the university campus. Thanks to these associations, you can have contact with other French students. Ask for the directory of clubs and societies (“Annuaire des associations”) when you arrive at the University of Lille 1.



### Summer Schools

*Each summer, international students can take part in summer schools on the campus. The aim of these intensive programmes is to learn or improve French language knowledge and learn more about French culture. Visits in the region are organised. These courses are open to every international student. That’s a good way to get prepared for studies in Lille!*

[www.univ-lille-nord-de-france.fr](http://www.univ-lille-nord-de-france.fr)  
(International-International Academy)

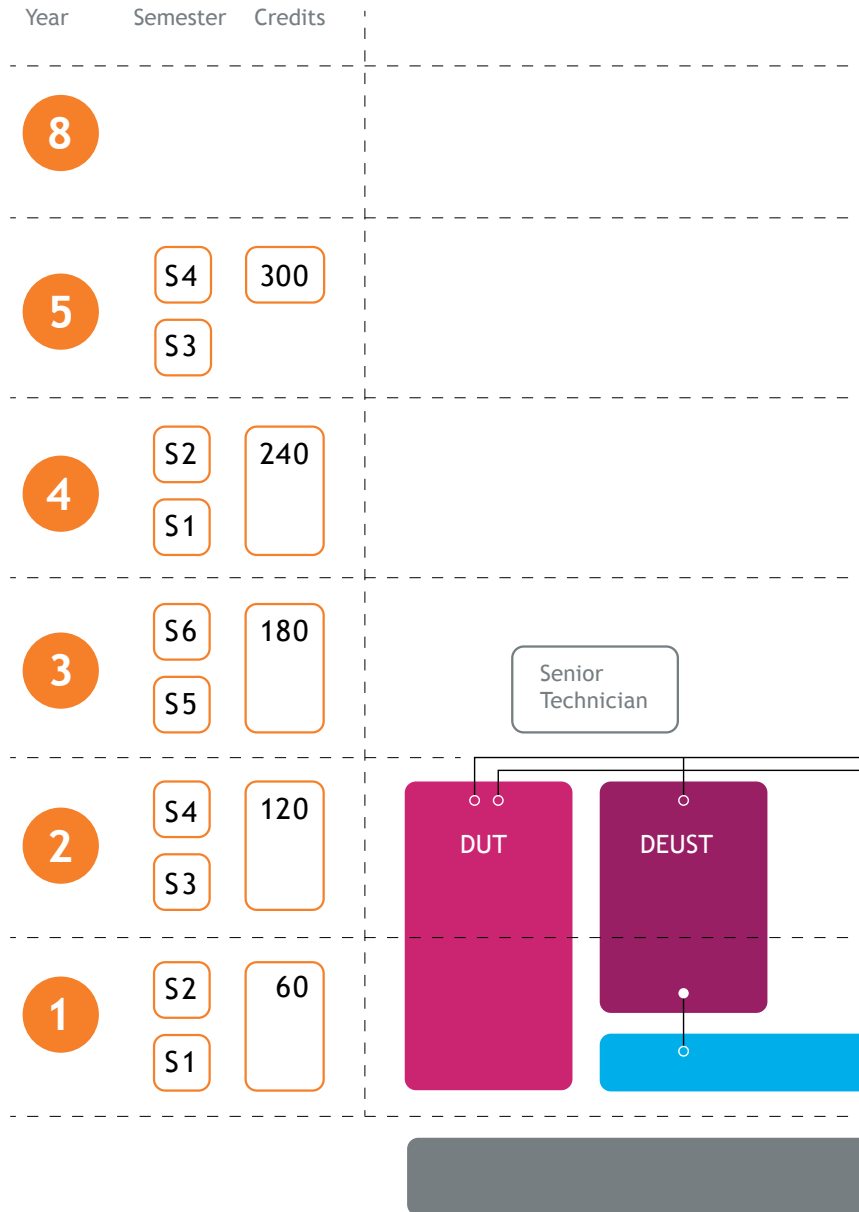


### Multimedia Ressources

*On the campus, there are different places where you can find a computer to work and also many wireless connections. When you enrol, a personal e-mail address is automatically issued. You will receive a weekly newsletter and then become a real actor of the Lille 1 community. The Moodle pedagogical platform will help you get information about courses and access to all e-resources.*

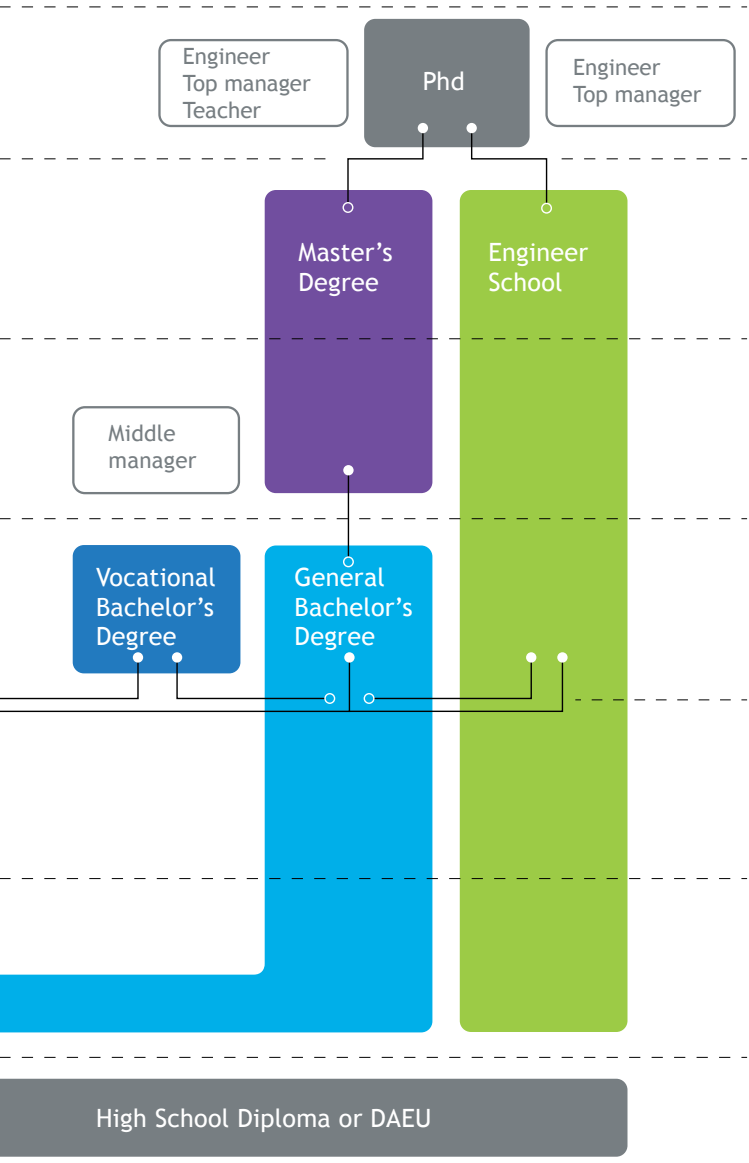
# The French Higher Education System

The University of Lille 1 has adopted the Bologna process and the courses are organised around three levels :



## Lille 1 includes 5 doctoral schools:

- Engineering Sciences
- Material (including Physics, Chemistry, Earth and Life Sciences), Radiation and Environmental Sciences
- Biology and Health
- Economics, Development and Management Sciences
- Humanities and Social Sciences









# Business Administration

## Field of study

Management

## Faculty

Business and Management School

## Degree obtained

Bachelor in Business Administration

## Length

1 year (60 credits)

## Academic cooperation

Exchange students accepted

## Admission Requirements

Two years of higher education or a working experience.

Erasmus students must be in a Business administration curriculum in their own university. Others can be without experience or education in Business Administration.

## English Proficiency

This program is completely in English.

A good command of English is required. Proof of proficiency must be provided (TOEFL, TOEIC,...).

## French Proficiency

Basic knowledge is recommended for better integration in French life.

French language training will be provided by the University of Lille 1.

## Objectives

The Bachelor in Business Administration is a one-year program of courses in English, on the main domains of Business Administration and management (*Organizational Behaviour, Accountancy, Marketing, Information systems, Firm economics, Finance management, Management and entrepreneurship, Human Resources Management*). Each course is credited in the European Credit Transfer System (ECTS). This program is offered to non French students, to French students interested by a curriculum in English, and to middle-managers. Graduates can work in any types of services (*banking, telecommunications, accounting firms,...*) or pursue higher education.

## Tuition fees

This programme is part of the French University System, which is widely sponsored by the State. As an indication, admission fees were 254 € (+211€ for healthcare insurance for non EU students) for academic year 2013-2014.

contact : [Valitova Aysylu](mailto:aysylu.valitova@iae.univ-lille1.fr)

e-mail : [aysylu.valitova@iae.univ-lille1.fr](mailto:aysylu.valitova@iae.univ-lille1.fr)

website : [iae.univ-lille1.fr](http://iae.univ-lille1.fr)

# Advanced Spectroscopy in Chemistry

## Field of study

Chemistry

## Faculty

Chemistry

## Degree obtained

Master of Science

## Academic cooperation

Erasmus Mundus Label until September 2014

## Length

2 years (120 credits)

## Admission Requirements

Application for admission in the ASC programme is entitled for students holding a *Eurobachelor in Chemistry* or equivalent education in the field of Chemistry, Biochemistry, Physical Chemistry and Physics. European and non European students can apply.

## English Proficiency

English is the language of instruction in all 5 ASC partner institutions. A good command of English is required. Proof of proficiency must be provided (TOEFL, TOEIC,...).

## French Proficiency

Basic knowledge is recommended for better integration in French life. French language training will be provided by the University of Lille 1.

## Objectives

The ASC network aims at preparing students to become experts and develop international skills towards doctoral studies, and/or professional industrial careers in chemical analysis and characterization of the structure of materials.

A mobility scheme ensures that, in addition to high specialization and access to state of the art technologies, students will do a common core curriculum of studies in different higher education institutions throughout Europe.

## Tuition fees

This programme is part of the French University System, which is widely sponsored by the State. As an indication, admission fees were 254 € (+211€ for healthcare insurance for non EU students) for academic year 2013-2014.

contact : Sylvain Cristol

e-mail : [master-asc@univ-lille1.fr](mailto:master-asc@univ-lille1.fr)

website : [master-asc.org](http://master-asc.org)

# Atmospheric Environment

## Field of study

Chemistry and Physics of the Atmosphere

## Faculty

Chemistry, Physics

## Degree obtained

Master Degree

## Length

1 year (60 credits)

## Academic cooperation

Exchange students accepted

Fellowships are available for students having the highest academic records (7 000 €/year).

## Admission Requirements

The programme is open to students who have earned 240 credits (or equivalent) in a study programme in chemistry, physics or chemical physics.

## English Proficiency

A good command of English is required. Proof of proficiency must be provided (TOEFL, TOEIC,...).

## French Proficiency

Basic knowledge is recommended for better integration in French life. French language training will be provided by the University of Lille 1.

## Objectives

The program is dedicated to physicists and chemists wishing to follow a specialization in atmospheric sciences to get a strong background in theory and practical works. It is supported by the French Laboratory of Excellence CaPPA (Chemical and Physical Properties of the Atmosphere).

## Tuition fees

This programme is part of the French University System, which is widely sponsored by the State. As an indication, admission fees were 254 € (+211€ for healthcare insurance for non EU students) for academic year 2013-2014.

contact : Denis Petitprez  
e-mail : [denis.petitprez@univ-lille1.fr](mailto:denis.petitprez@univ-lille1.fr)  
website : [labex-cappa.univ-lille1.fr](http://labex-cappa.univ-lille1.fr)

# Electrical Engineering and Sustainable Development

## Field of study

Engineering

## Faculty

Computer Science, Electronics, Electrotechnics and Automation

## Degree obtained

Master Degree

## Length

1 year (60 credits)

## Academic cooperation

Exchange students accepted

## Admission Requirements

The programme is opened to students who have earned 240 credits (or equivalent) in a scientific university study programme.

## English Proficiency

A minimum B2 level on the Common European Framework of Reference for Languages is required.

Proof of proficiency must be provided (TOEFL, TOEIC,...).

## French Proficiency

Basic knowledge is recommended for better integration in French life. French language training will be provided by the University of Lille 1.

## Objectives

This Master degree is focused on methodologies for design and for energy management in order to:

- Increase the insertion of the renewable energy for the production of electricity and for the use of future transportation systems.
- Improve performances of electrical systems in terms of efficiency and reduction of disturbances.

This master degree aims at contributing to a more sustainable use of energy resources and greater interest in environmental concern. It is taught in English in order to provide the students with the necessary skills for international jobs.

## Tuition fees

This programme is part of the French University System, which is widely sponsored by the State. As an indication, admission fees were 254 € (+211 € for healthcare insurance for non EU students) for academic year 2013-2014.

contact : [Betty Lemaire-Semail](mailto:Betty.Lemaire-Semail)  
e-mail : [virginie.grard@univ-lille1.fr](mailto:virginie.grard@univ-lille1.fr)  
website : [master-ase.univ-lille1.fr](http://master-ase.univ-lille1.fr)

# Micro-Nanotechnology

## Field of study

Micro-Nanotechnology

## Faculty

Computer Science, Electronics, Electrotechnics and Automation

## Degree obtained

Master Degree

## Length

1 year (60 credits)

## Academic cooperation

Exchange students accepted, excepted for Law and Management Unit

## Admission Requirements

The programme is opened to students who have earned 240 credits (or equivalent) in a study programme in electrical engineering or physics.

## English Proficiency

A good command of English is required. Proof of proficiency must be provided (TOEFL, TOEIC,...).

## French Proficiency

Basic knowledge is recommended for better integration in French life. French language training will be provided by the University of Lille 1.

## Objectives

The scientific objective is to provide students with:

- Good knowledge of advanced devices (Magnetic, organic, semiconductor devices, MEMs,  $\mu$ fluidic...).
- Good knowledge of material properties, and technology (in cleanroom environment).
- Characterization techniques of materials and devices with special emphasis on nano and high frequency characterization.

Special emphasis will be made on interdisciplinary fields, required to interact with other scientific domains. Indeed, important innovations emerge at the border of different subjects as micro- and nano-electronics are in several systems and applications covering telecommunication, ambient intelligence, bio, medical imaging, sustainable development... It is essential to know how to communicate with these other scientific fields. ***A dual master degree with 2 universities is also possible.***

## Tuition fees

This programme is part of the French University System, which is widely sponsored by the State. As an indication, admission fees were 254 € (+211€ for healthcare insurance for non EU students) for academic year 2013-2014.

contact : Sylvain Bollaert  
e-mail : [pascale.petit@univ-lille1.fr](mailto:pascale.petit@univ-lille1.fr)  
website : [master-mint.univ-lille1.fr](http://master-mint.univ-lille1.fr)

# Mathematical Engineering, Advanced Scientific Computing

## Field of study

Mathematics, Computer Science

## Faculty

Mathematics

## Degree obtained

Master Degree

## Length

1 year (60 credits)

## Academic cooperation

Exchange students accepted

## Admission Requirements

The programme is open to students who have earned 240 credits (or equivalent) in a scientific university study programme or have obtained a Bachelor Degree with Honors in the areas that could be accepted by the Academic Board of the Programme to be equivalent.

## English Proficiency

A good command of English is required. Proof of proficiency must be provided (TOEFL, TOEIC,...).

## French Proficiency

Basic knowledge is recommended for better integration in French life. French language training will be provided by the University of Lille 1.

## Objectives

This master degree in Mathematical Engineering, specialized in advanced scientific computing offers a top rate international interdisciplinary training year in applied scientific computing. It is designed for postgraduate students who wish to specialize in modeling, numerical simulation and supercomputing. Students will have free access to computer facilities dedicated to high performing scientific computing and the latest computational tools. This master prepares students to become fully qualified engineers or research and development engineers in various sectors such as car industry, aeronautics, space research, nuclear energy, environment, fossil and renewable energy. It also leads to a doctoral thesis in a research laboratory or in the industry.

## Tuition fees

This programme is part of the French University System, which is widely sponsored by the State. As an indication, admission fees were 254 € (+211€ for healthcare insurance for non EU students) for academic year 2013-2014.

contact : [Christophe Besse / Nouredine Melab](mailto:math-masters2@univ-lille1.fr)

e-mail : [math-masters2@univ-lille1.fr](mailto:math-masters2@univ-lille1.fr)

website : [mathematiques.univ-lille1.fr](http://mathematiques.univ-lille1.fr)





# Translational Neurosciences

## Field of study

Life Sciences

## Faculty

Biology

## Degree obtained

Master Degree

## Length

2 years (120 credits)

## Academic cooperation

Exchange students accepted

## Admission Requirements

The curriculum is geared to students with a BSc degree in life sciences or natural sciences.

## English Proficiency

A good command of English is required. Proof of proficiency must be provided (TOEFL, TOEIC,...).

## French Proficiency

No specific requirement

## Objectives

The European Master in Translational Neuroscience consists of a two-year curriculum (120 European credits, ECTS) of ten consecutive modules, four methodological courses, a short (6 weeks) and a long (36 weeks) research internship and is designed as a multi-disciplinary and international program with a focus on translational research. ***While the modules are taught at Maastricht University, students spend their six weeks research elective and the master thesis at laboratories of the different partner universities (University of Lille 1 included).***

This European Master is planned as an international research training program in cellular, molecular and systemic neuroscience with the major focus on the translation of basic research to clinical applications. The curriculum prepares students for academic and industry related careers in biomedical research of the nervous system.

## Tuition fees

Students registered at University of Lille 1 will pay Lille 1 fees (254€ in 2013-2014).

contact : Maastricht University (NL) / Lille 1: Michel Salzet

e-mail : [secr.euron@maastrichtuniversity.nl](mailto:secr.euron@maastrichtuniversity.nl) / Lille 1: [michel.salzet@univ-lille1.fr](mailto:michel.salzet@univ-lille1.fr)

website : [emtneuroscience.eu/thuis](http://emtneuroscience.eu/thuis)

# Biology and Biotechnology, Genomics and Proteomics, speciality Proteomics

## Field of study

Life Sciences

## Faculty

Biology

## Degree obtained

Master Degree

## Length

1 year (60 credits)

## Academic cooperation

Exchange students accepted

## Admission Requirements

The curriculum is geared to students with a BSc degree in biology.

## English Proficiency

A good command of English is required. Proof of proficiency must be provided (TOEFL, TOEIC,...).

## French Proficiency

Basic knowledge is recommended for better integration in French life. French language training will be provided by the University of Lille 1.

## Objectives

- Expert in proteomic (clinical, functional, of networks)
- Expert in mass spectrometry and bio-analytical methodologies
- High background in all "OMICS" technologies

Applications to clinics, Pharmaceutical and Cosmetics companies

A dual degree with three Japanese universities is also possible.

## Tuition fees

This programme is part of the French University System, which is widely sponsored by the State. As an indication, admission fees were 254 € (+211€ for healthcare insurance for non EU students) for academic year 2013-2014.

contact : Michel Salzet

e-mail : [michel.salzet@univ-lille1.fr](mailto:michel.salzet@univ-lille1.fr)

website : [laboratoire-prism.fr](http://laboratoire-prism.fr)

# Urban Engineering and Habitat

## Field of study

Multidisciplinary - Engineering

## Faculty

Engineering

## Degree obtained

Master Degree

## Length

1 year (60 credits)

## Academic cooperation

Exchange students accepted

## Admission Requirements

This master is open to engineers and BS holders.

Applicants must show evidence of scientific ability as well as a great interest in dealing with complex interdependencies systems.

## English Proficiency

A good command of English is required. Proof of proficiency must be provided (TOEFL, TOEIC,...).

## French Proficiency

Basic knowledge is recommended for better integration in French life. French language training will be provided by the University of Lille 1.

## Objectives

Courses are taught in English by an international staff. The master is open to international students.

This master provides a wide multidisciplinary overview of urban infrastructure systems and habitat and their interactions and interdependencies. Thanks to this program, graduate students acquire scientific, technical and management skills to deal with challenges related to the design, construction, rehabilitation and maintenance of urban structures and systems. Graduates could work in engineering and construction companies, city planning and technical departments as well as in research and higher education institutes.

## Tuition fees

This programme is part of the French University System, which is widely sponsored by the State. As an indication, admission fees were 254 € (+211 € for healthcare insurance for non EU students) for academic year 2013-2014.

contact : [Isam Shahrou](mailto:isam.shahrou@univ-lille1.fr)

e-mail : [isam.shahrou@univ-lille1.fr](mailto:isam.shahrou@univ-lille1.fr)

website : [masteringenieriebaineethabitat.wordpress.com](http://masteringenieriebaineethabitat.wordpress.com)

# Past and Current Geoenvironments

## Field of study

Geosciences

## Faculty

Earth Sciences

## Degree obtained

Master Degree

## Length

1 year (60 credits)

## Academic cooperation

Exchange students accepted

## Admission Requirements

A four-year undergraduate degree in the fields of Earth and Environmental Sciences

## English Proficiency

A good command of English is required. Proof of proficiency must be provided (TOEFL, TOEIC,...)..

## French Proficiency

Basic knowledge is recommended for better integration in French life. French language training will be provided by the University of Lille 1.

## Objectives

Advanced training in various aspects related to Sedimentology, Structural Geology, Palaeontology and Geochemistry.

## Tuition fees

This programme is part of the French University System, which is widely sponsored by the State. As an indication, admission fees were 254 € (+211 € for healthcare insurance for non EU students) for academic year 2013-2014.

contact : [Taniel Danelian](mailto:taniel.danelian@univ-lille1.fr)

e-mail : [taniel.danelian@univ-lille1.fr](mailto:taniel.danelian@univ-lille1.fr)

website : [sciences-de-la-terre.univ-lille1.fr](http://sciences-de-la-terre.univ-lille1.fr)





# Executive International Management

Field of study  
Management

Faculty  
Business and Management School

Degree obtained  
Master Degree

Length  
1 year (60 credits)

## Admission Requirements

Candidates must obtain a Bachelor's degree and have started their studies aiming at a Master's degree. There are no nationality criteria. All candidates must pre-register at [iae.univ-lille1.fr](http://iae.univ-lille1.fr)

## English Proficiency

A good command of English is required. Proof of proficiency must be provided (TOEFL, TOEIC,...).

## French Proficiency

Working knowledge of French is recommended. Proof of French proficiency should be provided.

## Objectives

The objective of the “International Executive Management”, specialization “Business Management”, is to educate senior executives in charge of international development in companies operating in a complex international and intercultural environment. The programme aims at offering an approach concentrating on social, economic and international aspects of business. It focuses on the development of both technical and personal skills in different fields of strategy and management.

## Tuition fees

This programme is part of the French University System, which is widely sponsored by the State. As an indication, admission fees were 254 € (+211€ for healthcare insurance for non EU students) for academic year 2013-2014.

contact : Jean-Louis Prinnet  
e-mail : [jean-louis.prinet@iae.univ-lille1.fr](mailto:jean-louis.prinet@iae.univ-lille1.fr)  
website : [iae.univ-lille1.fr](http://iae.univ-lille1.fr)

# Economics of Globalisation and European Integration

## Field of study

Economics

## Faculty

Economics and Management

## Degree obtained

Master of Arts

## Length

1 year (60 credits)

## Academic cooperation

Erasmus Mundus Label from September 2013 to August 2018

Exchange students accepted

## Admission Requirements

The programme is open to students who have earned 240 credits in an economics or applied economics university study programme or have a bachelor degree in these areas that is considered by the Joint Studies Board to be equivalent.

## English Proficiency

A good command of English is required. Proof of proficiency must be provided (TOEFL, TOEIC,...).

## French Proficiency

No specific requirement.

## Objectives

The programme is aimed at students with career aspirations in research, in government and international organisations, and in research departments of large banks and industrial and commercial corporations.

## Tuition fees

3 300 € for European students

7 000 € for non European students

In addition, the student has to finance the cost of living at each of the destinations, travel cost and the cost of study materials. EU-nationals and students from candidate countries for accession can in principle benefit from an Erasmus grant.

contact : [Mieke Vermeire](mailto:mieke.vermeire@ua.ac.be) / *Lille 1*: [Hubert Jayet](mailto:Hubert Jayet)

e-mail : [mieke.vermeire@ua.ac.be](mailto:mieke.vermeire@ua.ac.be) / *Lille 1*: [hubert.jayet@univ-lille1.fr](mailto:hubert.jayet@univ-lille1.fr)

website : [ua.ac.be/egei](http://ua.ac.be/egei)

# Global e-Business

## Field of study

Business and Technology

## Faculty

Economics and Management

## Degree obtained

Master Degree

## Length

1 year (60 credits)

## Admission Requirements

A four-year undergraduate degree in the fields of either computer sciences, information technology, telecommunications, international management, economics.

## English Proficiency

A good command of English is required. Proof of proficiency must be provided (TOEFL, TOEIC,...). The required IELTS score is 6,5.

## French Proficiency

Basic knowledge is recommended for better integration in French life. French language training will be provided by the University of Lille 1.

## Objectives

The Master Global e-Business allows students to develop dual skills as well as effective leadership. This master incorporates network technologies and a wide range of learning methods such as case studies, joint action project, seminar and theoretical overview. More than a general idea of the ICT tools, the global e-business analyzes business process management and webmethods solutions for the companies. The link between business and ICT is the cornerstone of the programme.

## Tuition fees

This programme is part of the French University System, which is widely sponsored by the State. As an indication, admission fees were 254 € (+211 € for healthcare insurance for non EU students) for academic year 2013-2014.

contact : Olivier Sirven  
e-mail : [olivier.sirven@univ-lille1.fr](mailto:olivier.sirven@univ-lille1.fr)  
website : [ses.univ-lille1.fr](http://ses.univ-lille1.fr)

# Management of European Affairs

## Field of study

Economics and management

## Faculty

Economics and Management

## Degree obtained

Master Degree

## Length

1 year (60 credits)

## Academic cooperation

Exchange students accepted under conditions; Opportunity to have a double degree with the University of Wildau, Germany

## Admission Requirements

MEA program is entitled for:

- Students holding 240 credits in Social and Political Sciences, Economics, Management or an equivalent degree.
- Possible derogation may be considered for students with a technical or a scientific profile.

## English Proficiency

A good command of English is required (*see website for test scores details*). Proof of proficiency must be provided (TOEFL, TOEIC,...).

## French Proficiency

Basic knowledge is recommended for better integration in French life. French language training will be provided by the University of Lille 1.

## Objectives

Master of Management of European Affairs trains selected students with expert knowledge on European Union and its institutions, economy, management processes and finance.

- This multidisciplinary Master covers 5 main areas : European Institutions and EU law and fundamentals / Analysis of the European Economic Area / Cross-cultural management as well as European business strategies and management / Micro and Macroeconomic finance in European context / Negotiation.
- Different tools and methods are developed to implement theoretical skills into practice : Language courses / Group projects / Case studies / Internship or dissertation.

## Tuition fees

As an indication, admission fees were 254 € (+211 € for healthcare insurance for non EU students) for academic year 2013-2014. Students will support an average cost of 200 € for Brussels immersion seminar.

contact : Prof. Hadjila Krifa-Schneider  
e-mail : [mastermea@univ-lille1.fr](mailto:mastermea@univ-lille1.fr)  
website : [master-mea.univ-lille1.fr](http://master-mea.univ-lille1.fr)

# Eurostudies

## European Studies for Territorial and Urban Development

### Field of study

Geography

### Faculty

Geography

### Degree obtained

Master Degree

### Length

1 year (60 credits)

### Academic cooperation

Exchange students accepted

### Admission Requirements

This master is open to students who have earned 240 credits in a study programme in Political Science, Geography, Planning, Architecture, Public Law or other fields of studies related to urban and territorial matters.

### English Proficiency

A good command of English is required. Proof of proficiency must be provided (TOEFL, TOEIC,...).

### French Proficiency

Basic knowledge is recommended for better integration in French life. French language training will be provided by the University of Lille 1.

### Objectives

The aim of the programme is to train professionals in the field of territorial and urban development engineering in a European context (cross-boarder projects, development of international networks and elaboration of strategies in the framework of metropolitan development). The aim is also to encourage research (thesis) in the field of territorial and urban development in a European context (compared analyses).

### Tuition fees

This programme is part of the French University System, which is widely sponsored by the State. As an indication, admission fees were 254 € (+211€ for healthcare insurance for non EU students) for academic year 2013-2014.

contact : [Francois-Olivier Seys](mailto:francois-olivier.seys@univ-lille1.fr)  
e-mail : [francois-olivier.seys@univ-lille1.fr](mailto:francois-olivier.seys@univ-lille1.fr)  
website : [geographie.univ-lille1.fr](http://geographie.univ-lille1.fr)

# Intercultural Mediation : Identities, Mobilities, Conflicts

## Field of study

Psychology, History, Humanities

## Faculty

University of Lille 3

## Degree obtained

Master Degree

## Length

2 years (120 credits)

## Academic cooperation

Erasmus Mundus Label

## Admission Requirements

This master is open to students who have earned 240 credits in a study programme in Political Science, Geography, Planning, Architecture, Public Law or other fields of studies related to urban and territorial matters.

## English Proficiency

A good command of English is required. Proof of proficiency must be provided (TOEFL, TOEIC,...).

## French Proficiency

Students should provide proof of French Proficiency (DELFI, TCF).

## Objectives

MITRA "Borders and travel: the cultural changes and dynamics of the territories" is a bi-lingual interdisciplinary MA programme in Human and Social Sciences meant to respond to the acute needs in intercultural mediation triggered by contemporary international and transnational mobility/displacement.

Endowed with tools and know-how in argumentation and intercultural negotiation, the MITRA expert, strongly experienced with the ethical dimension, is skilled in anticipating political, social and behavioural consequences of displacements and in acting with inter-group relations. Due to a strong research-based approach, this master leads to further PhD studies and it provides to the MA graduates transferable competences that open career opportunities in various areas of activity: national and international institutions, human resources in enterprises, governance territorial units or branches.

## Tuition fees

4 000 € for European Union (EU) students

8 000 € for non EU students

contact : [University of Lille 3](http://University of Lille 3)

e-mail : [mitra@univ-lille3.fr](mailto:mitra@univ-lille3.fr)

website : [mitra.ifres.info](http://mitra.ifres.info)







# Université Lille 1

Sciences et Technologies

.....  
Cité Scientifique  
F-59655 Villeneuve d'Ascq cedex  
Tél : +33 (0)3 20 43 43 43

[international@univ-lille1.fr](mailto:international@univ-lille1.fr)  
[ci.univ-lille1.fr](http://ci.univ-lille1.fr)  
[univ-lille1.fr/home](http://univ-lille1.fr/home)